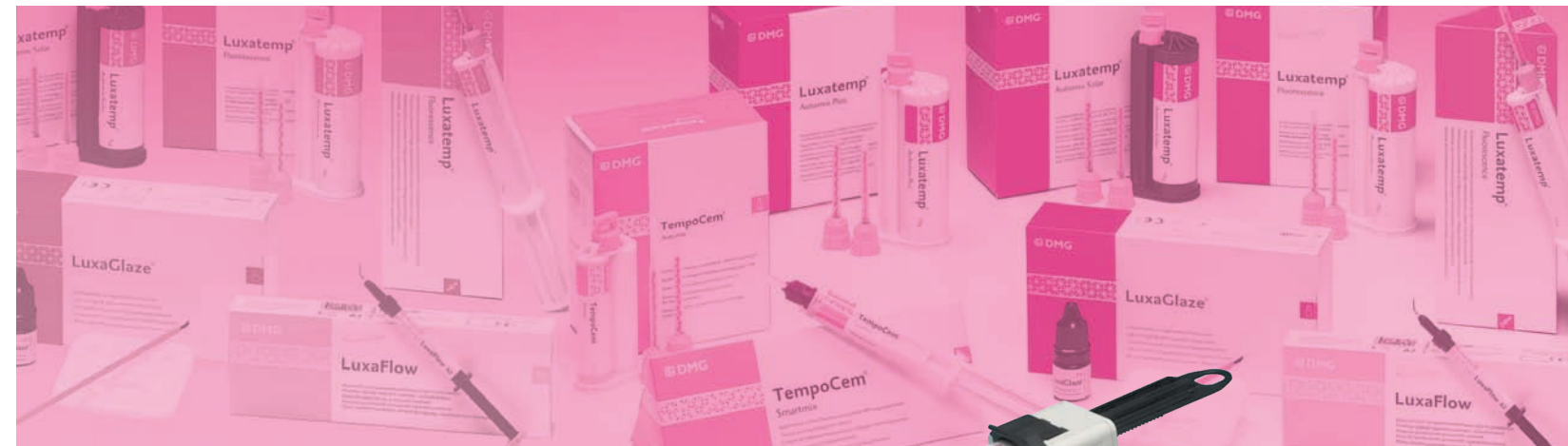


Luxatemp® Fluorescence	
110585	Luxatemp Fluorescence Refill - A1 (1-76 g Cartridge and 15 Automix Tips)
110586	Luxatemp Fluorescence Refill - A2 (1-76 g Cartridge and 15 Automix Tips)
110710	Luxatemp Fluorescence Refill - A3 (1-76 g Cartridge and 15 Automix Tips)
110587	Luxatemp Fluorescence Refill - A3.5 (1-76 g Cartridge and 15 Automix Tips)
110588	Luxatemp Fluorescence Refill - B1 (1-76 g Cartridge and 15 Automix Tips)
110589	Luxatemp Fluorescence Refill - Bleach Light (1-76 g Cartridge and 15 Automix Tips)
110351	Luxatemp Automix Tips (All 76 g Cartridges - Bag of 25)
110411	Luxatemp Automix Dispensing Gun (1 Type-50 10:1 Gun)
110719	Luxatemp Fluorescence Smartmix - A2 (1-15 g Syringe and 10 Smartmix Tips - Green)
110722	Luxatemp Fluorescence Smartmix - B1 (1-15 g Syringe and 10 Smartmix Tips - Green)
110723	Luxatemp Fluorescence Smartmix - Bleach Light (1-15 g Syringe and 10 Smartmix Tips - Green)
110728	Smartmix Green Mixing Tips (Bag of 25)
Luxatemp® Automix Plus	
110400	Luxatemp Automix Plus Intro Kit (1-76 g Cartridge A2, 15 Automix Tips and 1 Type-50 Dispensing Gun)
110401	Luxatemp Automix Plus Refill - A1 (1-76 g Cartridge and 15 Automix Tips)
110402	Luxatemp Automix Plus Refill - A2 (1-76 g Cartridge and 15 Automix Tips)
110403	Luxatemp Automix Plus Refill - A3.5 (1-76 g Cartridge and 15 Automix Tips)
110404	Luxatemp Automix Plus Refill - B1 (1-76 g Cartridge and 15 Automix Tips)
110368	Luxatemp Automix Plus Refill - Bleach Light (1-76 g Cartridge and 15 Automix Tips)
110351	Luxatemp Automix Tips (All 76 g Cartridges - Bag of 25)
110411	Luxatemp Automix Dispensing Gun (1 Type-50 10:1 Gun)
110405	Luxatemp Automix Plus Bulk Pack - A1 (5-76 g Cartridges and 75 Automix Tips)
110406	Luxatemp Automix Plus Bulk Pack - A2 (5-76 g Cartridges and 75 Automix Tips)
110407	Luxatemp Automix Plus Bulk Pack - A3.5 (5-76 g Cartridges and 75 Automix Tips)
110408	Luxatemp Automix Plus Bulk Pack - B1 (5-76 g Cartridges and 75 Automix Tips)
Luxatemp® Automix Solar	
110360	Luxatemp Automix Solar Refill - Shade A2 (Universal) (1-76 g Cartridge and 15 Automix Tips)
LuxaFlow™/LuxaFlow™ Fluorescence	
211751	LuxaFlow Intro Kit (1-1.5 g Syringe each of A1, A2, A3.5 and B1, plus 20 Syringe Tips)
211753	LuxaFlow Light (A1) Refill (2-1.5 g Syringes and 10 Syringe Tips)
211754	LuxaFlow Universal (A2) Refill (2-1.5 g Syringes and 10 Syringe Tips)
211755	LuxaFlow Dark (A3.5) Refill (2-1.5 g Syringes and 10 Syringe Tips)
211756	LuxaFlow Ultra-Lite (B1) Refill (2-1.5 g Syringes and 10 Syringe Tips)
220303	LuxaFlow Fluorescence Intro Kit (1-1.5 g Syringe each of A1, A2, A3.5, and B1, plus 20 Syringe Tips)
220300	LuxaFlow Fluorescence Refill - A1 (2-1.5 g Syringes and 10 Syringe Tips)
220301	LuxaFlow Fluorescence Refill - A2 (2-1.5 g Syringes and 10 Syringe Tips)
220306	LuxaFlow Fluorescence Refill - A3 (2-1.5 g Syringes and 10 Syringe Tips)
220302	LuxaFlow Fluorescence Refill - A3.5 (2-1.5 g Syringes and 10 Syringe Tips)
220304	LuxaFlow Fluorescence Refill - B1 (2-1.5 g Syringes and 10 Syringe Tips)
211759	LuxaFlow Syringe Tips (Bag of 20 Syringe Tips)
LuxaGlaze®	
212075	LuxaGlaze Kit (5 ml Dropper Bottle, Mixing Pallet and 25 soft, disposable Application Brushes)
TempoCem®	
110246	TempoCem Automix Intro Kit (1-63 g Cartridge, 50 Automix Tips and 1 Type-25 Dispensing Gun)
110300	TempoCem Automix Refill (1-63 g Cartridge and 40 Automix Tips)
212129	TempoCem Smartmix (2-11 g Syringes and 10 Smartmix Tips)
110301	TempoCemNE Automix Intro Kit (1-60 g Cartridge, 50 Automix Tips and 1 Type-25 Dispensing Gun)
110302	TempoCemNE Automix Refill (1-60 g Cartridge and 40 Automix Tips)
212104	TempoCemNE Smartmix (2-11 g Syringes and 10 Smartmix Tips)
110303	TempoCem Automix Soft Refill (1-63 g Cartridge and 40 Automix Tips)
110253	TempoCem Automix Dispensing Gun (1 Type-25 1:1 Gun)
110266	Automix Tips (Bag of 50)
212040	Smartmix Tips (Bag of 50)

Luxatemp®

The Ultimate Esthetic Provisional System

■ The preferred provisional material



Advantages

- A complete, advanced system to produce highly esthetic provisionals
- Choice of fast, convenient Automix dispensing systems
- Unique bisacryl composition for durable temporaries
- Variety of lifelike shades for superior esthetic results



For more information, call us at **1-800-662-6383**. To find out more about all of our innovative dental products, visit our website at www.dmg-america.com

DMG America

242 South Dean Street
 Englewood, New Jersey 07631
 P: 800-662-6383 • 201-894-5505
 F: 201-894-0213 • www.dmg-america.com



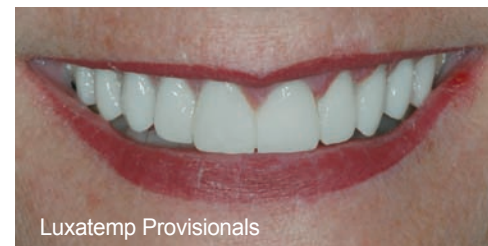
For Perfect Provisionals, Dentists Choose The Luxatemp® Family

Creating highly esthetic temporary crown and bridge restorations is an important part of today's permanent restoration process. For over a decade, DMG has provided the system of choice for clinicians to produce esthetically superior provisionals that protect the tooth structure and look and feel like natural teeth.

Luxatemp was the first bisacryl provisional material introduced as an Automix material in the U.S. and Canada. Its superior chemistry and convenient dispensing system quickly made it the best selling provisional material and the benchmark in the U.S.

DMG provides a complete family of provisional materials that meet the needs of the dentist and patient, including: **Luxatemp Automix Plus**, the original Automix material; **Luxatemp Fluorescence**, a provisional material with enhanced esthetics; **Luxatemp Automix Solar**, a light-cured material; **LuxaFlow Fluorescence** and **LuxaFlow** add-on materials; **LuxaGlaze** light-cured varnish; and **TempoCem** temporary cements. All are convenient to use and deliver exceptional results.

As dentistry has become an art as well as a science, more dentists rely on the complete, advanced Luxatemp system to create durable provisionals that mirror the natural, beautiful look of the final restoration.



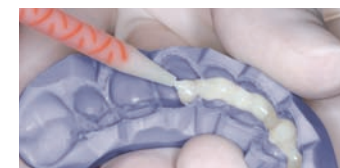
The Luxatemp Provisional System creates temporaries with the esthetic quality of the final restoration – for greater treatment acceptance and a better patient experience.

Photos courtesy of Dr. Jon Marashi, DDS, San Clemente, CA

DISPENSING KEY:

- 25 1:1 Automix for Type-25 Dispensing Gun
- 50 10:1 Automix for Type-50 Dispensing Gun
- SM 1:1 Smartmix syringes
- SM 10:1 Smartmix syringes

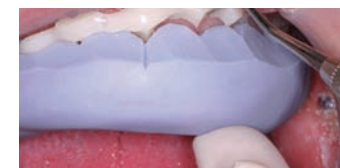
Creating perfect provisionals with Luxatemp Fluorescence:



Luxatemp Fluorescence material being dispensed into a StatusBlue®* matrix.



Matrix loaded with Luxatemp Fluorescence is placed over prepared teeth.



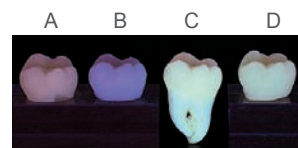
The matrix is easily removed from the mouth.



The end result: a highly esthetic, natural-looking temporary.

*StatusBlue alginate replacement

Photos courtesy of Dr. Tony Soileau, DDS, Lafayette, LA



Luxatemp Fluorescence looks natural under all lighting conditions, including black light!

- A Structur 2 QM - Voco
- B Protemp® 3 Garant® - 3M ESPE
- C Natural tooth
- D Luxatemp Fluorescence



Provisionals with Luxatemp Fluorescence take on the same dynamic reflective qualities as natural tooth structure, creating a more lifelike appearance.

Luxatemp® Fluorescence

Let your patients see their future smile in its true light!

The addition of the optimal percentage of Fluorescence to the original formulation of best-selling Luxatemp resulted in a technological breakthrough – a provisional material that produces temporaries that look dramatically more lifelike in all lighting conditions! Winner of the **“REALITY’S CHOICE” Five Star Award** and the **2009 Dental Advisor Top Provisional Material Award**, Luxatemp Fluorescence is available in your choice of dispensing systems: 76 g cartridges for the **Type-50 10:1 Automix dispensing gun**, available in 6 (5 Vita) lifelike shades (A1, A2, A3, A3.5, B1, Bleach Light); as well as convenient 10:1 **Smartmix® dispensing syringes**, available in three shades (A2, B1, Bleach Light).



Luxatemp® Automix Plus/Luxatemp® Automix Solar

Setting the standard for convenience, durability and esthetics.

Due to its superior formulation and no-mess, no-mix dispensing system, Luxatemp Automix Plus remains the benchmark provisional material on the market, and still the easiest way to go from gun to matrix to mouth. Its low shrinkage results in highly accurate temporaries with excellent marginal adaptation. Available in 5 (4 Vita) lifelike shades (A1, A2, A3.5, B1, Bleach Light) for superior esthetic results. Luxatemp Automix Solar, available in A2 shade, offers unlimited working time, then light cures in seconds. Both are excellent for multi-unit, long-span bridges.



LuxaFlow™ Fluorescence/LuxaFlow™

The add-on resin formulated to work with all bisacryl provisionals.

LuxaFlow provides superior compatibility with Luxatemp and other bisacryl provisional materials. Its easy-to-apply formula provides controlled working time and light-cures on demand. Syringe tip delivery enables precise placement, while its non-slumping formula ensures the material will maintain accurate placement. Highly polishable for optimal esthetic results, LuxaFlow allows you to create beautiful, lifelike additions, repair voids and margins, and create long-lasting seals in the gingival margin interfaces. It's ideal for class I's, blocking out undercuts and as a solution for enamel defects. LuxaFlow is radiopaque for easy diagnosis. For precise color matching, original LuxaFlow comes in 4 shades (A1, A2, A3.5, B1); LuxaFlow Fluorescence comes in 5 shades (A1, A2, A3, A3.5, B1).



LuxaGlaze® Light-Cured Varnish

The perfect finishing touch for any provisional!

LuxaGlaze is a one-bottle, light-cured varnish perfect for glazing the surface of temporaries fabricated with Luxatemp, as well as any other provisional materials. It light cures in as little as 10 seconds, providing a quick, easy and esthetically superior alternative to mechanical polishing. Your patients will love the lifelike high-gloss finish that greatly enhances the look of their temporary restorations!



TempoCem® Temporary Cements

The right adhesion for all types of provisionals.

Reliable, easy-to-use TempoCem temporary cements are available in three customized formulations for optimal adhesion. Original TempoCem has a zinc oxide/eugenol formula designed for use with all types of provisionals. TempoCem Soft has the same chemistry, but sets to a softer end hardness for easier removal of tight-fitting temporaries. The added eugenol in both cements works as an analgesic for patients with sensitive teeth. TempoCemNE is a non-eugenol formula used for cases where the final restoration will be cemented with a resin or resin-reinforced glass ionomer, because eugenol may inhibit resin polymerization. All three are available in 25 ml Automix cartridges for use with the Type-25 dispensing gun. TempoCem and TempoCemNE are also available in convenient Smartmix hand-held syringes.



PHYSICAL PROPERTIES: Luxatemp® Automix, Fluorescence and Solar

Chemistry	Bisacryl	Diametrical Tensile Strength	36 MPa
Mixing Ratio (Base/Catalyst)	10:1 (Volume)	Barcol Hardness	37
Compressive Strength	250 MPa	Water Sorption	0.76 w.%
Transverse Strength	91.5 MPa	Temperature Rise During Polymerization	38° C / 100° F